

1 BEDROOM + STUDY

Type AS1a(p)

44 sqm (474 sqft)

Block 32B

#01-14

#01-20

Block 34A

#01-34

Block 34B

#01-46

MIRRORED

Block 34

#01-26*

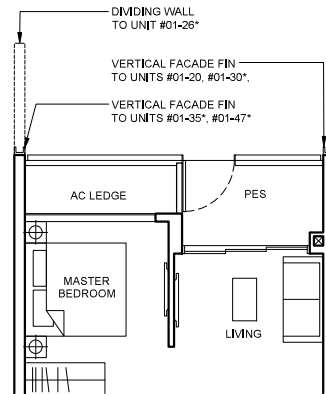
#01-30*

Block 34A

#01-35*

Block 34B

#01-47*



Type AS1a

44 sqm (474 sqft)

Block 32B

#02-14 To #08-14

#02-20 To #09-20

Block 34A

#02-34 To #08-34

Block 34B

#02-46 To #08-46

MIRRORED

Block 34

#02-26* To #09-26*

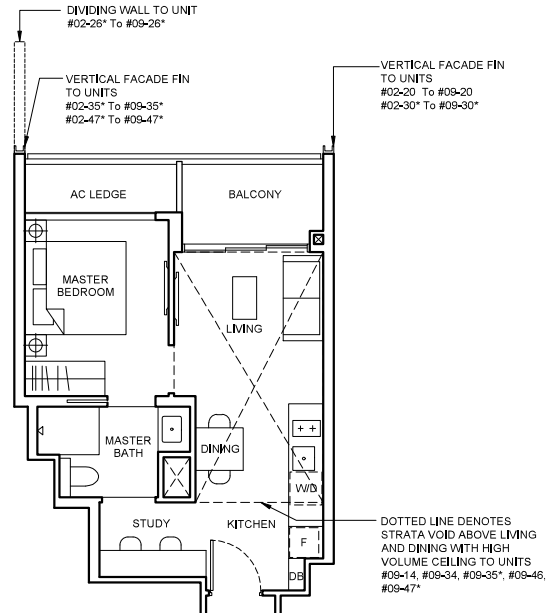
#02-30* To #09-30*

Block 34A

#02-35* To #08-35*

Block 34B

#02-47* To #08-47*



Type AS1a(PH)

58 sqm (624 sqft)

Strata void area of 14 sqm / 150 sqft above living and dining with high volume ceiling of 4415mm H.

Balcony at top floor is provided with canopy.

Block 32B

#09-14

Block 34A

#09-34

Block 34B

#09-46

MIRRORED

Block 34A

#09-35*

Block 34B

#09-47*

LEGEND

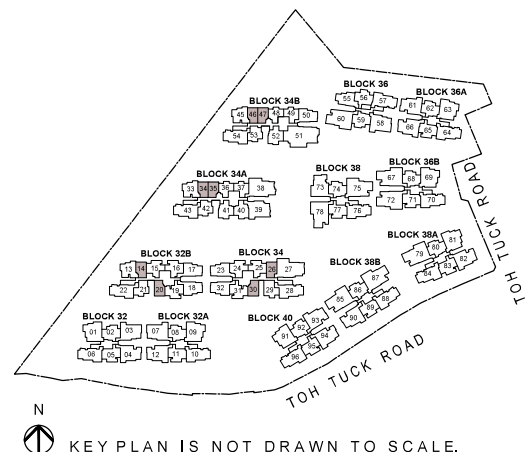
[W/D] WASHER CUM DRYER

[F] INTEGRATED FRIDGE

Note

- Area includes AC ledge, balcony and private enclosed space (PES), strata void (where applicable).
- The above plans and illustrations are subject to change as maybe required or approved by the relevant authorities.
- All floor areas are approximate only and subject to final survey.
- Please refer to the key plan for orientation.
- High volume space in (pd) unit does not constitute strata area.
- Service voids are excluded from strata area.
- RC ledge and / or RC trellis are excluded from strata area.

0 1 2 3 5M



2 BEDROOM

Type B2a(p)

53 sqm (570 sqft)

Block 32B

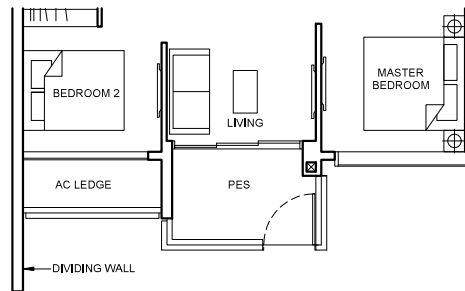
#01-21

Block 34A

#01-42

Block 34B

#01-53



Type B2a

53 sqm (570 sqft)

Block 32B

#02-21 To #08-21

Block 34A

#02-42 To #08-42

Block 34B

#02-53 To #08-53

Type B2a(PH)

65 sqm (700 sqft)

Strata void area of 12 sqm / 130 sqft above living and dining with high volume ceiling of 4415mm H.

Balcony at top floor is provided with canopy.

Block 32B

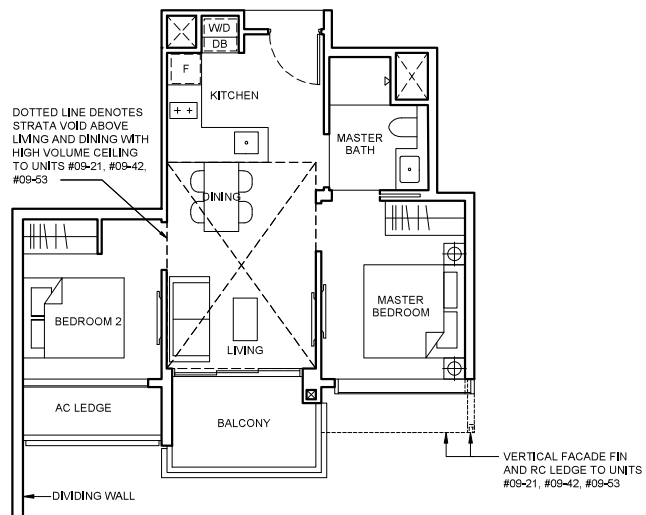
#09-21

Block 34A

#09-42

Block 34B

#09-53

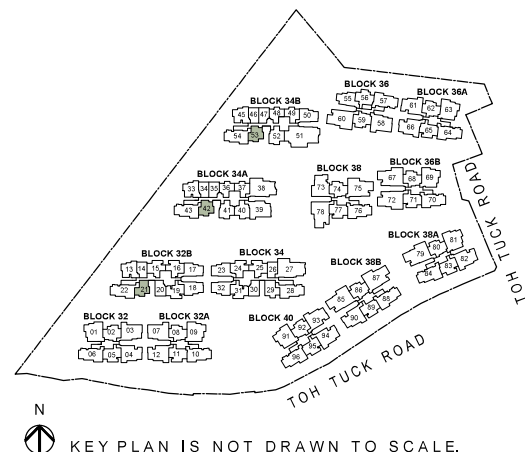


LEGEND

| | | | |
|-------|------------------|-----|-------------------|
| [W/D] | WASHER CUM DRYER | [F] | INTEGRATED FRIDGE |
|-------|------------------|-----|-------------------|

Note

- Area includes AC ledge, balcony and private enclosed space (PES), strata void (where applicable).
- The above plans and illustrations are subject to change as maybe required or approved by the relevant authorities.
- All floor areas are approximate only and subject to final survey.
- Please refer to the key plan for orientation.
- High volume space in (pd) unit does not constitute strata area.
- Service voids are excluded from strata area.
- RC ledge and / or RC trellis are excluded from strata area.



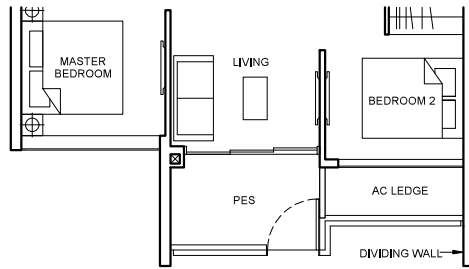
2 BEDROOM + STUDY

Type BS4(p)

64 sqm (689 sqft)

Block 34A

#01-40



Type BS4

64 sqm (689 sqft)

Balcony at top floor is provided with canopy.

Block 34A

#02-40 To #09-40

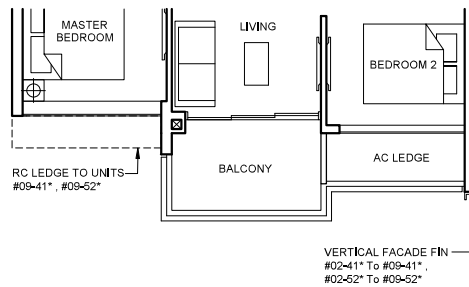
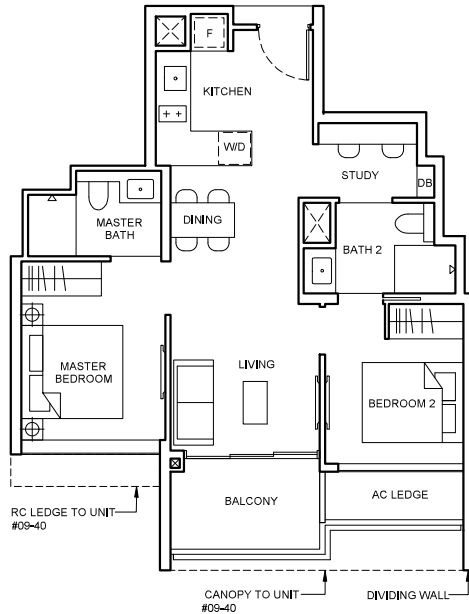
MIRRORED

Block 34A

#02-41* To #09-41*

Block 34B

#02-52* To #09-52*



Applicable to units #02-41* To #09-41*
#02-52* To #09-52*

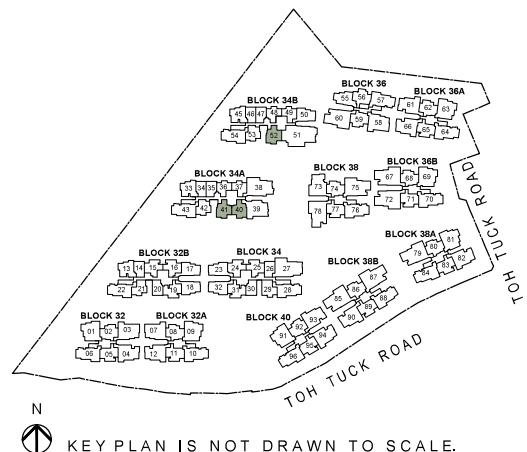
LEGEND

[W/D] WASHER CUM DRYER [F] INTEGRATED FRIDGE

Note

- Area includes AC ledge, balcony and private enclosed space (PES), strata void (where applicable).
- The above plans and illustrations are subject to change as maybe required or approved by the relevant authorities.
- All floor areas are approximate only and subject to final survey.
- Please refer to the key plan for orientation.
- High volume space in (pd) unit does not constitute strata area.
- Service voids are excluded from strata area.
- RC ledge and / or RC trellis are excluded from strata area.

0 1 2 3 5M



KEY PLAN IS NOT DRAWN TO SCALE.

2 BEDROOM DELUXE

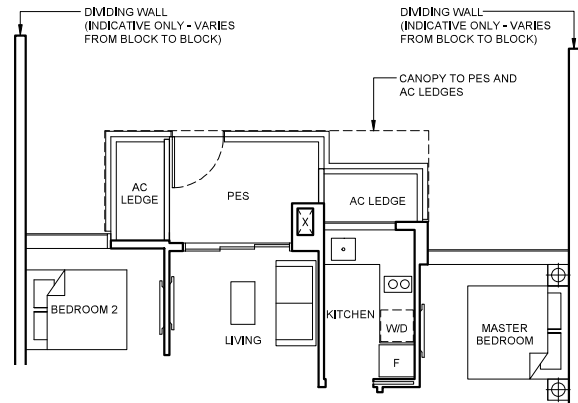
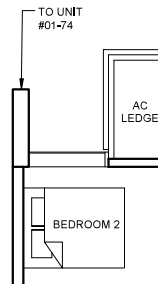
Type BHS1a(pd)

68 sqm (732 sqft)

Block 36A
#01-62
Block 36B
#01-68
Block 38
#01-74
Block 38A
#01-80
Block 38B
#01-86

MIRRORED

Block 32
#01-02*
Block 36
#01-59*
Block 40
#01-92*



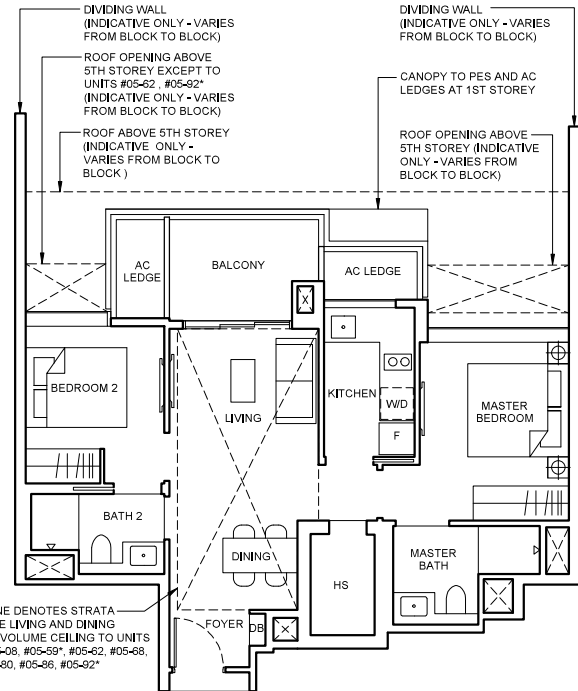
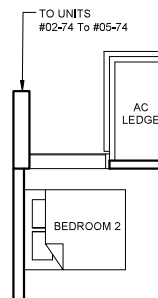
Type BHS1a

68 sqm (732 sqft)

Block 32A
#02-08 To #04-08
Block 36A
#02-62 To #04-62
Block 36B
#02-68 To #04-68
Block 38
#02-74 To #04-74
Block 38A
#02-80 To #04-80
Block 38B
#02-86 To #04-86

MIRRORED

Block 32
#02-02* To #04-02*
Block 36
#02-59* To #04-59*
Block 40
#02-92* To #04-92*



Type BHS1a(PH)

84 sqm (904 sqft)

Strata void area of 16 sqm / 172 sqft above living and dining with high volume ceiling of 4590mm H.

Block 32A
#05-08
Block 36A
#05-62
Block 36B
#05-68
Block 38
#05-74
Block 38A
#05-80
Block 38B
#05-86

MIRRORED

Block 32
#05-02*
Block 36
#05-59*
Block 40
#05-92*

DOTTED LINE DENOTES STRATA VOID ABOVE LIVING AND DINING WITH HIGH VOLUME CEILING TO UNITS #05-02*, #05-08, #05-59*, #05-62, #05-68, #05-74, #05-80, #05-86, #05-92*

LEGEND

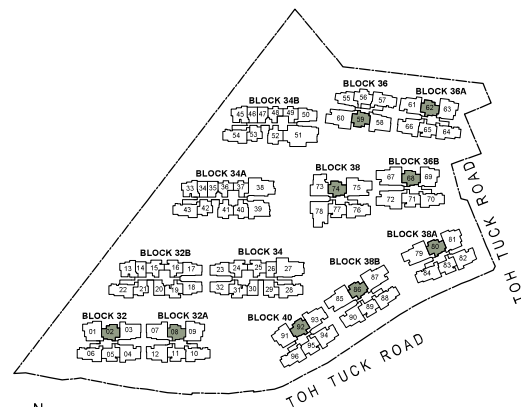
[W/D] WASHER CUM DRYER

[F] FRIDGE

Note

- Area includes AC ledge, balcony and private enclosed space (PES), strata void (where applicable).
- The above plans and illustrations are subject to change as maybe required or approved by the relevant authorities.
- All floor areas are approximate only and subject to final survey.
- Please refer to the key plan for orientation.
- High volume space in (pd) unit does not constitute strata area.
- Service voids are excluded from strata area.
- RC ledge and / or RC trellis are excluded from strata area.

0 1 2 3 5M



N
KEY PLAN IS NOT DRAWN TO SCALE.

3 BEDROOM DELUXE

Type C1a1(pd)

88 sqm (947 sqft)

Block 32A

#01-10

Block 36A

#01-64

Block 36B

#01-70

Block 38B

#01-88

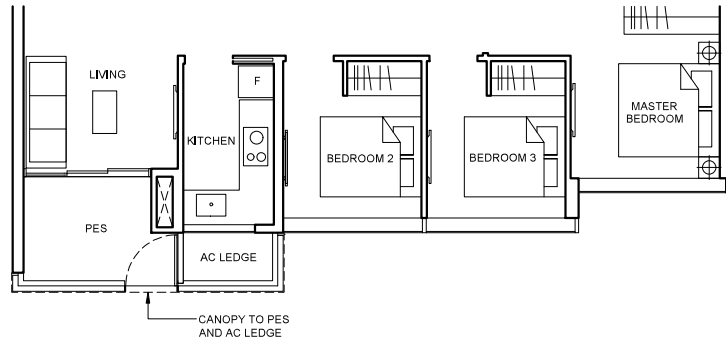
MIRRORED

Block 38A

#01-84*

Block 40

#01-96*



Type C1a1

88 sqm (947 sqft)

Block 32A

#02-10 To #04-10

Block 36A

#02-64 To #04-64

Block 36B

#02-70 To #04-70

Block 38B

#02-88 To #04-88

MIRRORED

Block 32

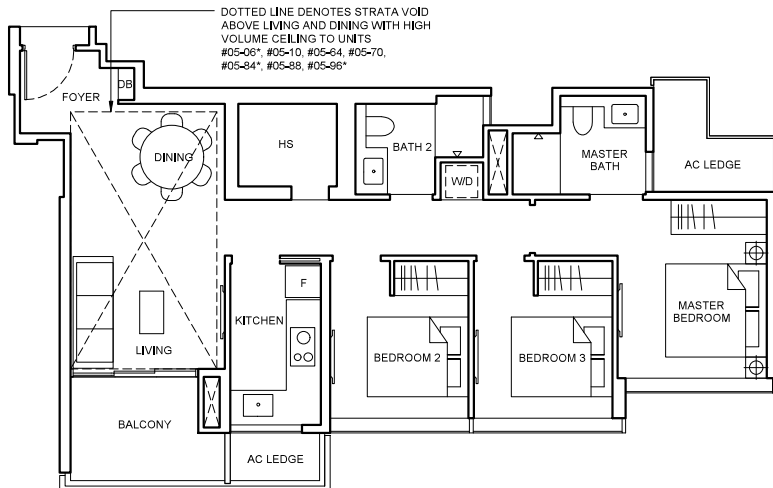
#02-06* To #04-06*

Block 38A

#02-84* To #04-84*

Block 40

#02-96* To #04-96*



Type C1a1(PH)

104 sqm (1119 sqft)

Strata void area of 16 sqm / 172 sqft above living and dining with high volume ceiling of 4590mm H.

Balcony at top floor is provided with canopy.

Block 32A

#05-10

Block 36A

#05-64

Block 36B

#05-70

Block 38B

#05-88

MIRRORED

Block 32

#05-06*

Block 38A

#05-84*

Block 40

#05-96*

LEGEND

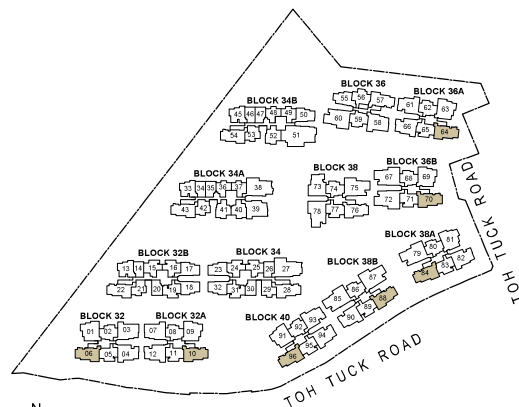
[W/D] WASHER CUM DRYER

[F] FRIDGE

Note

- Area includes AC ledge, balcony and private enclosed space (PES), strata void (where applicable).
- The above plans and illustrations are subject to change as maybe required or approved by the relevant authorities.
- All floor areas are approximate only and subject to final survey.
- Please refer to the key plan for orientation.
- High volume space in (pd) unit does not constitute strata area.
- Service voids are excluded from strata area.
- RC ledge and / or RC trellis are excluded from strata area.

0 1 2 3 5M



KEY PLAN IS NOT DRAWN TO SCALE.

4 BEDROOM PREMIUM

Type D1a(pd)

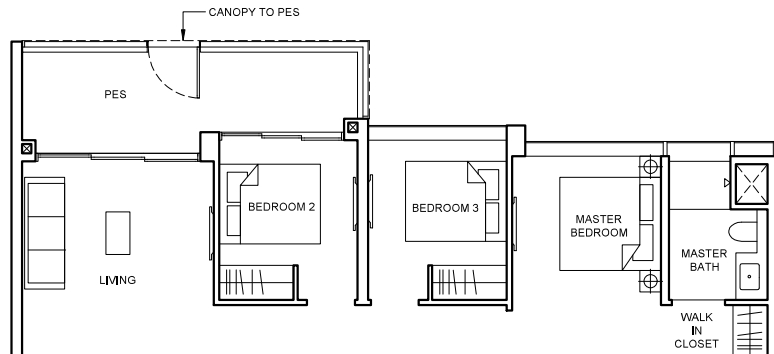
119 sqm (1281 sqft)

Block 38

#01-75

Block 38B

#01-87



Type D1a

119 sqm (1281 sqft)

Block 38

#02-75 To #04-75

Block 38B

#02-87 To #04-87

Type D1a(PH)

145 sqm (1561 sqft)

Strata void area of 26 sqm / 280 sqft above living and dining with high volume ceiling of 4590mm H.

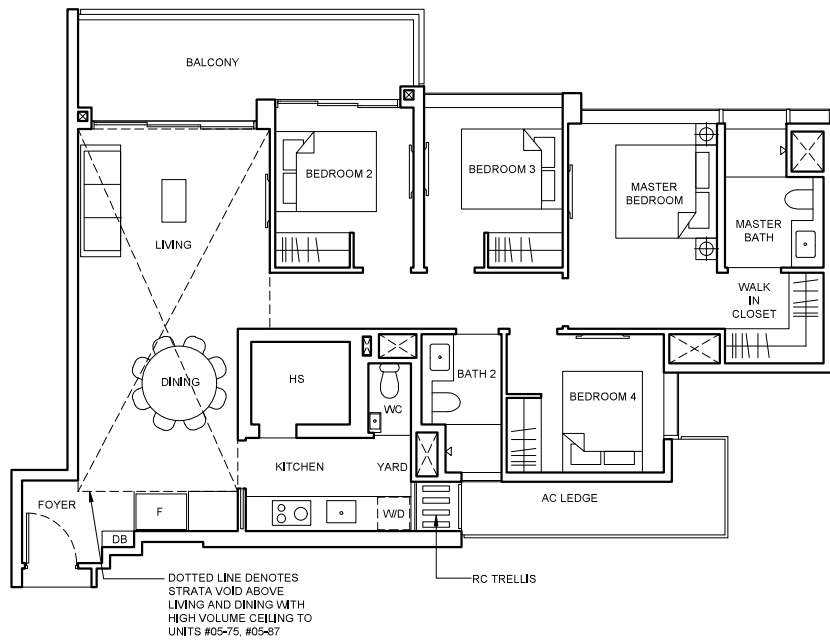
Balcony at top floor is provided with canopy.

Block 38

#05-75

Block 38B

#05-87



LEGEND

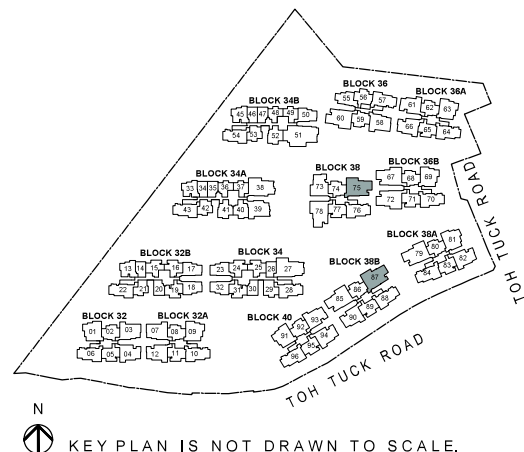
[W/D] WASHER CUM DRYER

[F] FRIDGE

Note

- Area includes AC ledge, balcony and private enclosed space (PES), strata void (where applicable).
- The above plans and illustrations are subject to change as maybe required or approved by the relevant authorities.
- All floor areas are approximate only and subject to final survey.
- Please refer to the key plan for orientation.
- High volume space in (pd) unit does not constitute strata area.
- Service voids are excluded from strata area.
- RC ledge and / or RC trellis are excluded from strata area.

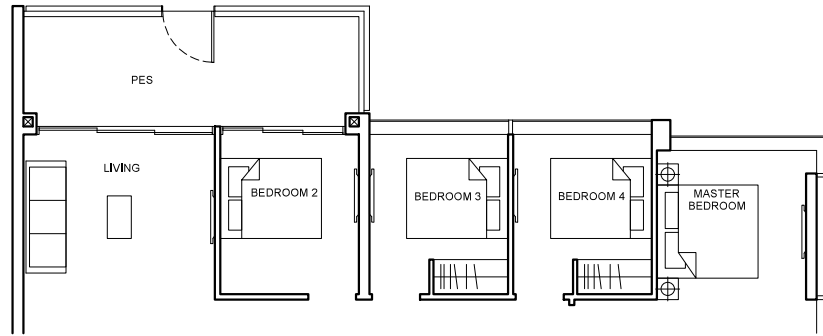
0 1 2 3 5M



4 BEDROOM SUITE

Type D3(p) 134 sqm (1442 sqft)

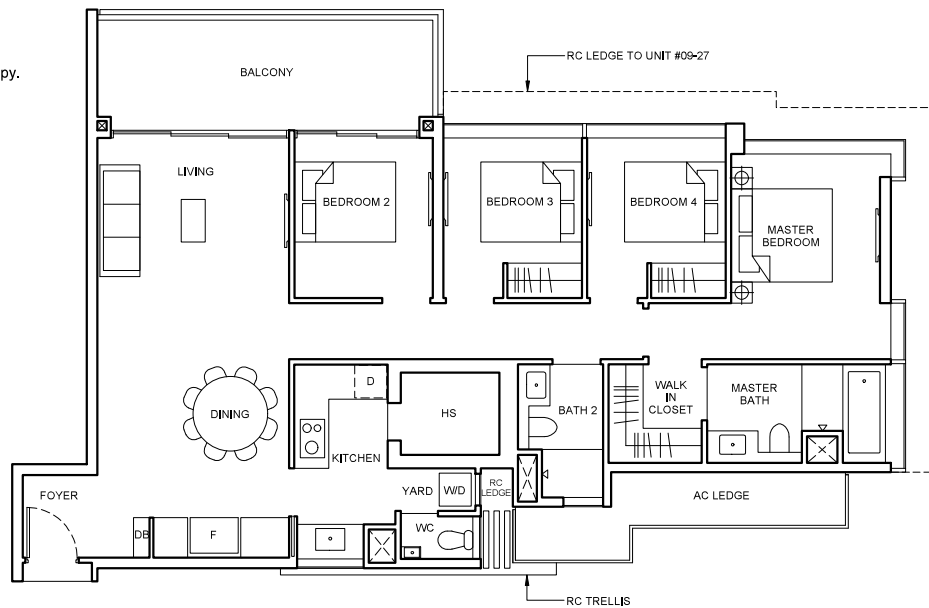
Block 34
#01-27



Type D3 134 sqm (1442 sqft)

Balcony at top floor is provided with canopy.

Block 34
#02-27 To #09-27



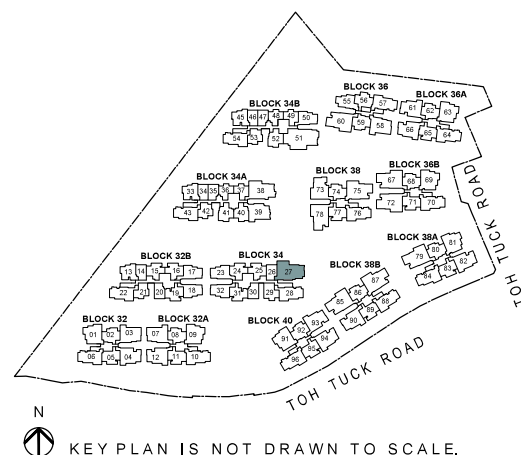
LEGEND

| | | | | | |
|-----|------------------|---|--------|---|------------|
| W/D | WASHER CUM DRYER | F | FRIDGE | D | DISHWASHER |
|-----|------------------|---|--------|---|------------|

Note

- Area includes AC ledge, balcony and private enclosed space (PES), strata void (where applicable).
- The above plans and illustrations are subject to change as maybe required or approved by the relevant authorities.
- All floor areas are approximate only and subject to final survey.
- Please refer to the key plan for orientation.
- High volume space in (pd) unit does not constitute strata area.
- Service voids are excluded from strata area.
- RC ledge and / or RC trellis are excluded from strata area.

0 1 2 3 5M



5 BEDROOM SUITE

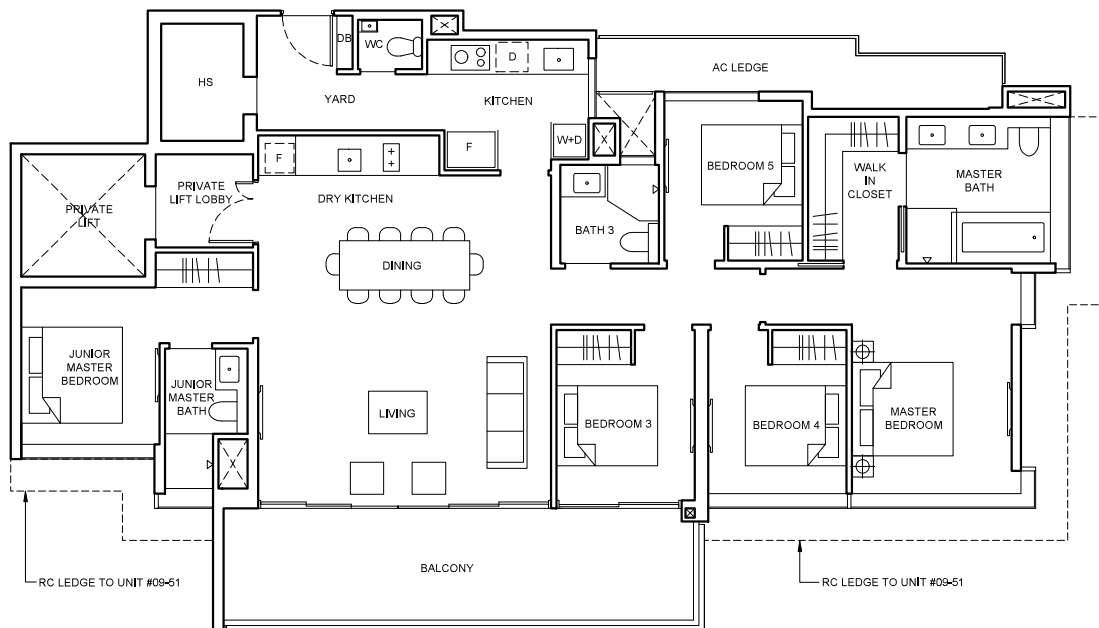
Type E

175 sqm (1884 sqft)

Balcony at top floor is provided with canopy.

Block 34B

#02-51 To #09-51



LEGEND

| | | | | | |
|-----|------------------|---|-------------------|---|--------|
| W+D | WASHER AND DRYER | F | INTEGRATED FRIDGE | F | FRIDGE |
| D | DISHWASHER | | | | |

Note

- Area includes AC ledge, balcony and private enclosed space (PES), strata void (where applicable).
- The above plans and illustrations are subject to change as maybe required or approved by the relevant authorities.
- All floor areas are approximate only and subject to final survey.
- Please refer to the key plan for orientation.
- High volume space in (pd) unit does not constitute strata area.
- Service voids are excluded from strata area.
- RC ledge and / or RC trellis are excluded from strata area.

0 1 2 3 5M

